

Product description **M12-A male panel mount connector, Contacts: 4, unshielded, solder, IP67, PG11**

Area **M12-A series 763**  
 Order number **09 0435 87 04**

| Illustration | Scale drawing | Contact arrangement (Plug-in side) |
|--------------|---------------|------------------------------------|
|              |               |                                    |

You can find the assembly instructions on the next page.

## Technical data

### General values

|                          |                            |
|--------------------------|----------------------------|
| Connector design         | male panel mount connector |
| Connector locking system | screw                      |
| Termination              | solder                     |
| Wire gauge (mm)          | 0.25 mm <sup>2</sup>       |
| Wire gauge (AWG)         | AWG 24                     |
| Upper limit temperature  | 85 °C                      |
| Lower limit temperature  | -40 °C                     |
| Customs tariff number    | 85369010                   |

### Electrical values

|                           |                     |
|---------------------------|---------------------|
| Rated current (40 °C)     | 4 A                 |
| Rated voltage             | 250 V               |
| Rated impulse voltage     | 2500 V              |
| Pollution degree          | 3                   |
| Overvoltage category      | II                  |
| Insulating material group | III                 |
| Insulation resistance     | > 10 <sup>8</sup> Ω |
| EMC compliance            | unshielded          |
| Degree of protection      | IP67                |
| Mechanical operation      | > 50 Mating cycles  |

### Material

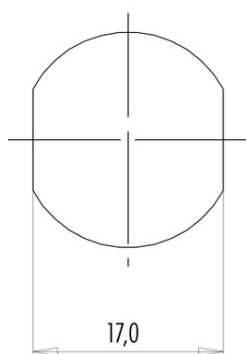
|                       |                      |
|-----------------------|----------------------|
| Contact material      | CuZn (brass)         |
| Contact plating       | Au (gold)            |
| Contact body material | PA                   |
| Housing material      | PA                   |
| Locking material      | plastic              |
| REACH SVHC            | CAS 7439-92-1 (Lead) |

Product description **M12-A male panel mount connector, Contacts: 4, unshielded, solder, IP67, PG11**

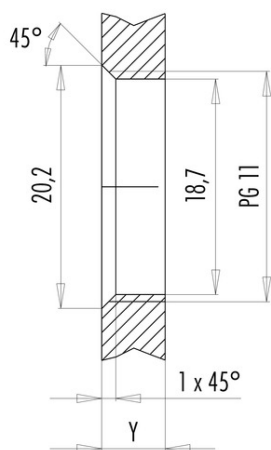
Area **M12-A series 763**  
 Order number **09 0435 87 04**

### Assembly instructions / Panel cut-out

With flats as anti-rotation device



With bore hole



Installation direction: o-ring sits on chamfer.

#### Tightening moment

Metall housing/Plastic housing 1,25 Nm

| Thickness of wall Y (mm)           |                                    |          |
|------------------------------------|------------------------------------|----------|
| Version                            | min (mm)                           | max (mm) |
| Fastened from rear                 | 2                                  | 3,5      |
| Front fastened                     | 2                                  | 4,5      |
| positioning possible <sup>1)</sup> | 2                                  | 3,5      |
| Screw clamp                        | 2                                  | 3,5      |
| Thread M12 x 1                     | 2                                  | 3,0      |
| Thread M14 x 1 <sup>2)</sup>       | <sup>3)</sup> 1,5/ <sup>4)</sup> 2 | 6,5      |

#### Notes

- <sup>1)</sup> Do not attach a chamfer
- <sup>2)</sup> Wall thickness:  
use locknut 01-5385 up to 1,5 mm,  
>1,5 mm cut thread
- <sup>3)</sup> Nut
- <sup>4)</sup> Thread in wall of housing

|                     |  |
|---------------------|--|
| Product description | <b>M12-A male panel mount connector, Contacts: 4, unshielded, solder, IP67, PG11</b> |
| Area                | <b>M12-A series 763</b>  |
| Order number        | <b>09 0435 87 04</b>   |

## Security notices

The connector must not be plugged or unplugged under load. Non-observance and improper use can result in personal injury.

The connectors have been developed for applications in plant engineering, control and electrical equipment construction. The user is responsible for checking whether the connectors can also be used in other areas of application.

Plug connectors with enclosure protection IP 67 and IP 68 are not suitable for use under water. When used outdoors, the plug connectors must be protected separately against corrosion. For further information on the IP protection classes, please refer to the "Technical Information" download centre.